



Clinical IS Update

Topic: INSPECT Opioid Tool – ED and OP Pain Clinics

Facility: IU Health and Union Health Outpatient Pain Clinics and Emergency Departments

Audience: Prescribing Providers

Effective Date
January 2, 2019

Contact
IU Health Help Desk
helpdesk@iuhealth.org

Overview: A newer version of the INSPECT Opioid tool has been added as a component on the Workflow MPages. This changes the workflow slightly for those using this system. Instead of using an external link, users now use an MPage to access the tool. The newer version provides multi-state data, rather than just data for Indiana (as provided by the old version).

Note: Residents must be able to access INSPECT at *all locations* during their rotation.

Legal Implications: For prescribers from Emergency Departments and Chronic Pain Clinics and for those who have INSPECT integrated into their EMR, it is Indiana state law that you must view the INSPECT report prior to writing for a controlled substance.

Advantages of updated INSPECT band:

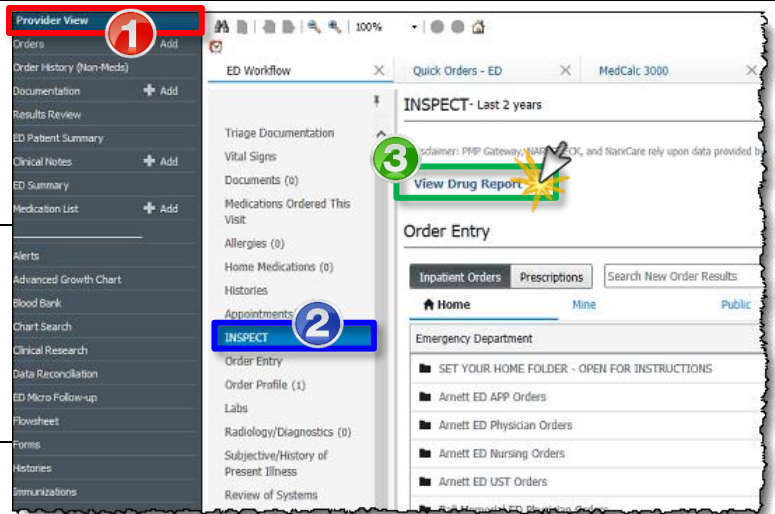
- No need for logging in
- Automatic authentication of patient, no need for patient search
- Reports much quicker than older tool

Location of new INSPECT component:

- Outpatient MPage Workflows
- Emergency Department MPage Workflow

Access INSPECT – Emergency Department Workflow

Step	Action
1	<p>Click on the Provider View band on the Table of Contents.</p> <p><i>The ED Workflow tab defaults open.</i></p>
2	<p>Click on the INSPECT band on the secondary Table of Contents.</p> <p><i>The INSPECT section displays in the View pane.</i></p>
3	<p>Click View Drug Report.</p> <p><i>The Drug Report displays.</i></p>

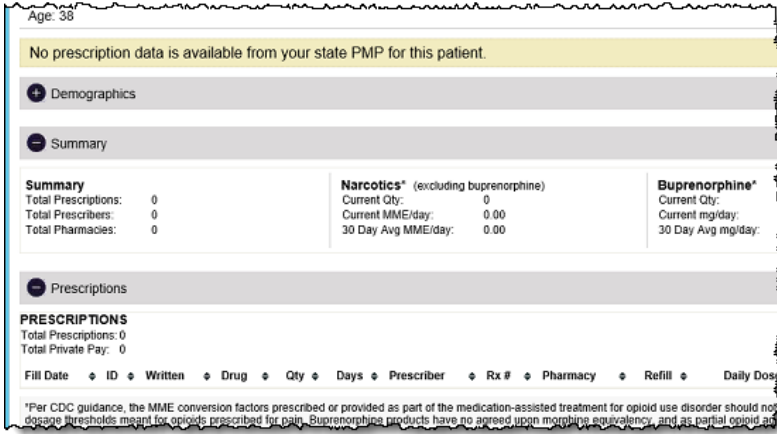


Continued on next page

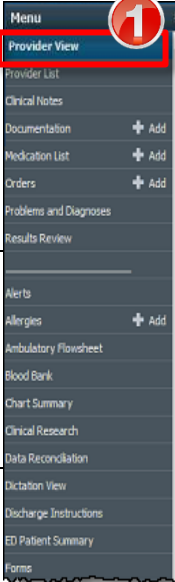
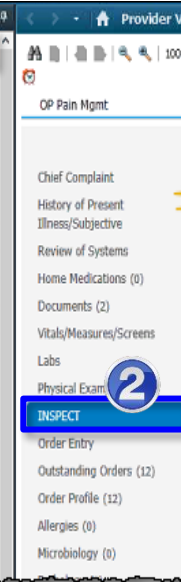
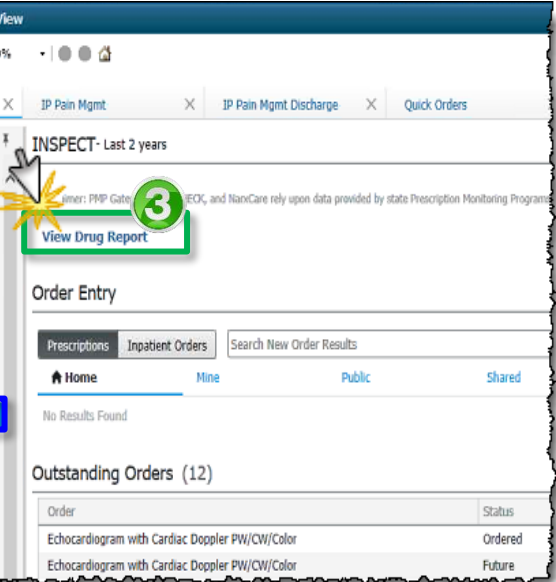


Clinical IS Update

Access INSPECT – Emergency Department Workflow, (continued)

Step	Action
4	<p>Close report once reviewed.</p> 

Access INSPECT – OP Pain Clinic Workflow

Step	Action
1	<p>Click on the Provider View band on the Table of Contents. <i>The OP Workflow tab defaults open.</i></p> 
2	<p>Click on the INSPECT band on the secondary Table of Contents. <i>The INSPECT section displays in the View pane.</i></p> 
3	<p>Click View Drug Report. <i>The Drug Report displays.</i></p> 

Continued on next page



Clinical IS Update

Access INSPECT – OP Pain Clinic Workflow, (continued)

Step

Action

4

Close report once reviewed.

No prescription data is available from your state PMP for this patient.

Demographics

Summary

Summary	Narcotics* (excluding buprenorphine)	Buprenorphine*
Total Prescriptions: 0	Current Qty: 0	Current Qty: 0
Total Prescribers: 0	Current MME/day: 0.00	Current mg/day: 0.00
Total Pharmacies: 0	30 Day Avg MME/day: 0.00	30 Day Avg mg/day: 0.00

Prescriptions

PRESCRIPTIONS
Total Prescriptions: 0
Total Private Pay: 0

Fill Date | ID | Written | Drug | Qty | Days | Prescriber | Rx # | Pharmacy | Refill | Daily Dose

*Per CDC guidance, the MME conversion factors prescribed or provided as part of the medication-assisted treatment for opioid use disorder should not be used as dosage thresholds meant for opioids prescribed for pain. Buprenorphine products have no agreed upon morphine equivalency, and as partial opioid agonists associated with overdose risk in the same dose-dependent manner as doses for full agonist opioids. MME = morphine milligram equivalents. LME = Lorazepam = dose in milligrams.

PROVIDERS
Total Providers: 0

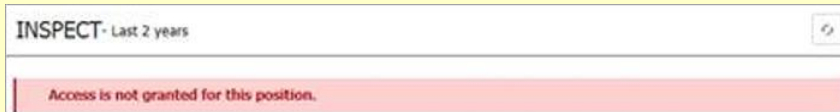
Name | Address | City | State | Zipcode

Notes:

- A message indicating the system does not currently have a required identifier or license (NPI or DEA) on file for the user may display after clicking on the INSPECT component. If this appears to be an error, please contact **Helpdesk: (317) 962-2828**.



- A message indicating only Prescribers have access to the report may display after clicking the INSPECT component. Non-Prescribers will see the following message:



References:

- Please review the INSPECT Opioid Tool – Residents document for Residents’ Workflow by clicking the link: [INSPECT Opioid Tool - Residents](#)
- Please reference the INSPECT Overview video for more information: [INSPECT Overview](#)